







## Day & Night Roller Blind by Furnished

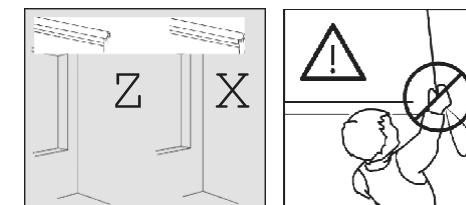
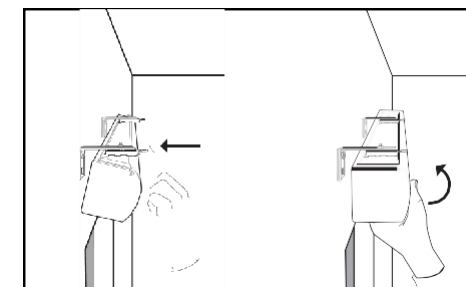
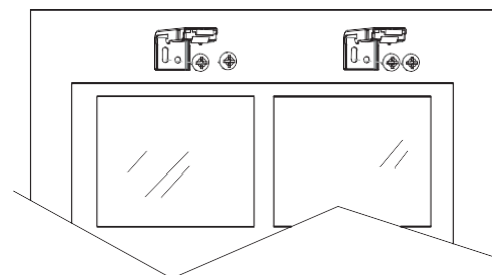
### CONTENTS

|                |   | Width   |            |
|----------------|---|---------|------------|
|                |   | <100 cm | 120-180 cm |
| Bracket A      |  | 2       | 3          |
| Screw plugs    |  | 5       | 7          |
| Screw          |  | 5       | 7          |
| Chain fastener |  |         |            |

- Position your Roller Blind as shown in the diagram until you hear a "click".

(The plugs are only suitable for solid, non-gypsum plasterboard walls, in which case seek the advice of a professional installer).

#### Wall Installation



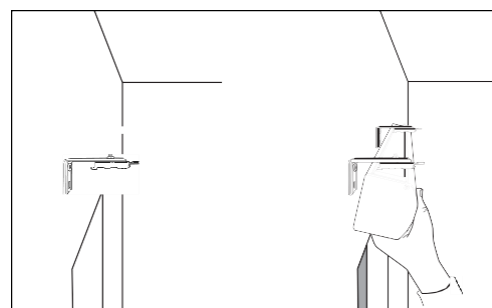
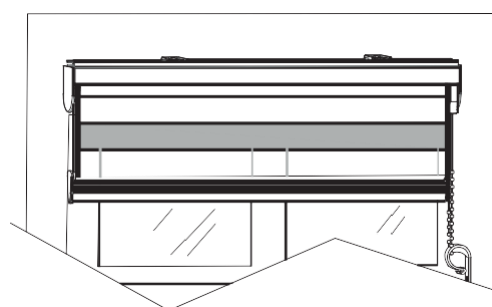
#### INSIDE THE WINDOW FRAME

- Define whether you will fix the brackets to the ceiling or wall.
- Measure or simulate with the blind the ideal position where it will be installed. With a pencil mark the points where the installation brackets should go.

- Using bracket A as a template, mark the screw positions at a maximum distance of 15 cm from the end of the bracket to the centre of the bracket. Drill 1/4" diameter holes and insert the supplied plugs.

Position your roller blind as shown in the diagram until you hear a "click".

(The plugs are only suitable for solid walls, not plasterboard, in such cases please seek the assistance of a professional installer).



### Thank you for choosing us!

You have just purchased a product by  
Furnished.

Please read this installation and  
maintenance manual carefully before  
proceeding with the installation of our Day  
& Night Roller Blinds.

### TOOLS FOR INSTALLATION

1. Measuring tape
2. Pencil
3. Step Ladder
4. Drill and 1/4" drill bit
5. 5 1/4" sockets (included) (installation to ceiling or concrete wall)
6. Crosshead screwdriver
7. Level (optional)

### STEPS TO INSTALL THE BLIND

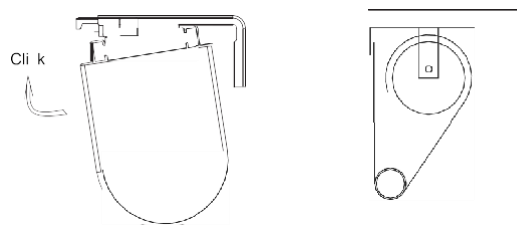
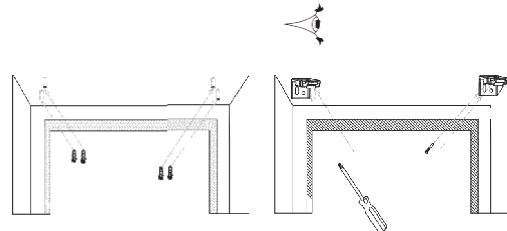
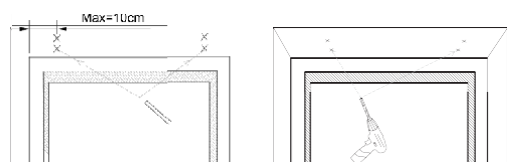
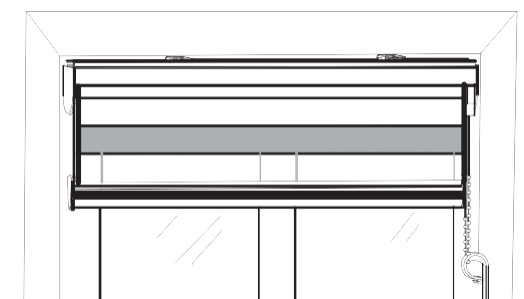
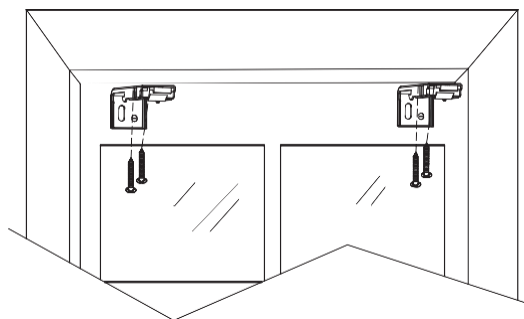
Before installing your Roller Blind, you must  
define the following:

- Whether to install the blind outside or  
inside the window frame.
- Whether you are installing the brackets on  
the ceiling or on the wall.

#### OUTSIDE THE WINDOW FRAME

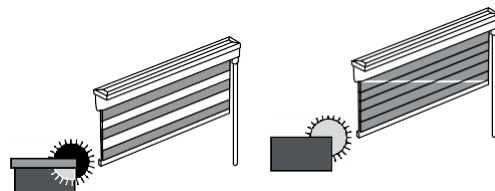
- Define whether you will fix the brackets  
to the ceiling or wall.
- Measure the blind in the ideal position  
where it will be installed. With a pencil  
mark the points where the installation  
brackets should go.
- Using Bracket A as a template, mark the  
screw positions at a maximum distance of  
15 cm from the end of the bracket to the  
centre of the bracket. Drill 1/4" diameter  
holes and insert the supplied plugs.

## Ceiling Installation

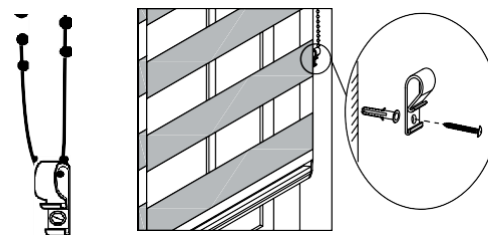


## HOW TO USE AND CLEAN THE BLIND

Pull the chain on the far right to overlap the strips and control the light entry. In addition, you can use this same chain to raise or lower the blind in its entirety.



## HOW TO ATTACH THE CHAIN FASTENER



Graph 1

Graph 2

Install the chain attachment to the wall and reduce the risk of strangulation in infants and young children. Install the chain fastener near the end of where a loop is formed in the chain. Insert the chain into the inner space formed by the p-shaped piece and mark the ideal position with a pencil (see figure 1). To operate the blind, you should never remove the chain from the chain fastener or safety clip, just do not allow the chain to become too tight, as this will cause the mechanism to malfunction. Then drill a 1/4" diameter hole and insert a plug and screw (see graph 2).

Note: Regularly check the chain clamp for looseness or slack. Over time the string can become loose and create a potential choking or strangulation hazard.

## CHAIN SAFETY

Children and strings/cords do not make a good combination. When cords are accessible to young children, these seemingly harmless products can become strangulation hazards. The Window Covering Safety Council (WCSC) and national standards urge that all areas of the home be checked for potential hazards caused by cords, strings or chains on curtains and blinds. Carefully follow the instructions for installation and use of the chain fastener or cord safety clip on the inside Furnished blinds.

Always remember to follow these basic cord safety rules:

- 1) Move all cradles, beds, furniture and toys away from windows. It is preferable to place them near windowless walls.



- 2) Keep all strings and cords out of the reach of children. Ensure that continuous loop strings are permanently anchored to the wall or floor and that stops are properly installed and adjusted to limit its movement.

